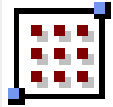
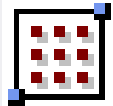


LIGHTING ANALYSIS SUMMARY



NB On Ramp

Average	1.09	fc
Maximum	1.92	fc
Minimum	0.33	fc
Max/Min	5.8:1	
Average/Min	3.3:1	



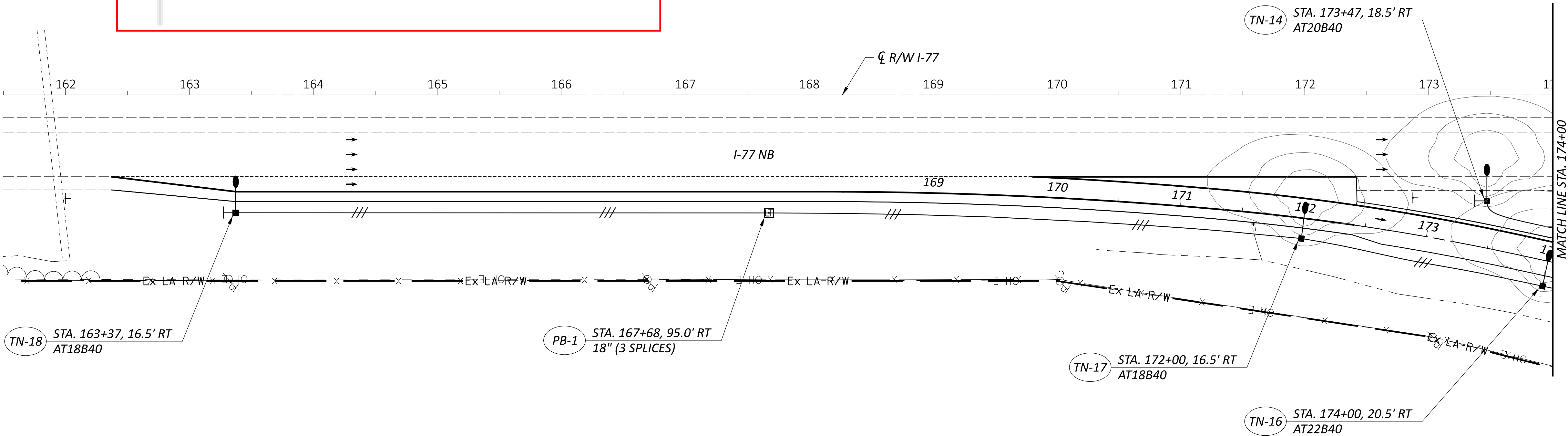
NB Truck Parking

Average	2.49	fc
Maximum	7.44	fc
Minimum	0.83	fc
Max/Min	9.0:1	
Average/Min	3.0:1	



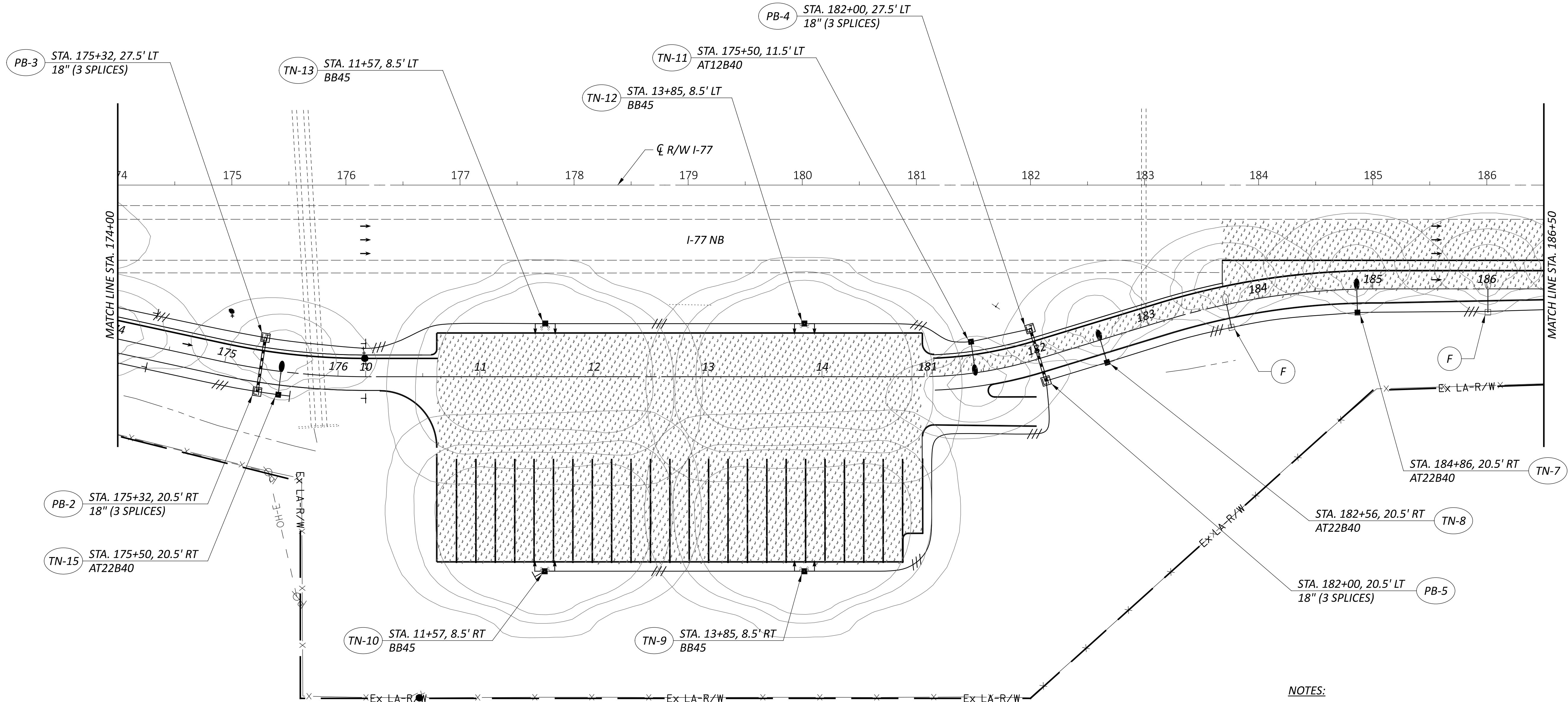
PLAN LEGEND

- XX-X LIGHT POLE W/ LED LUMINAIRE
- F FUTURE LIGHT POLE LOCATION
- XX-X HIGH MAST LIGHT TOWER W/ 2-LED ASYMMETRIC LUMINAIRES
- PB-X PULL BOX (LIGHTING), 725.08 (BY SIZE)
- PROPOSED POWER SERVICE
- 1-1/2" DUCT CABLE W/ 3-WIRE NO. X AWG
- 3" CONDUIT, 725.04 W/ 3-WIRE NO. X AWG DISTRIBUTION CABLE
- STUB & CAP CONDUIT ELL



NOTES:

- OFFSETS TO LIGHT POLES/TOWERS ARE FROM NEAREST EOP.
- OFFSETS TO PULL BOXES ARE FROM CL/CL.



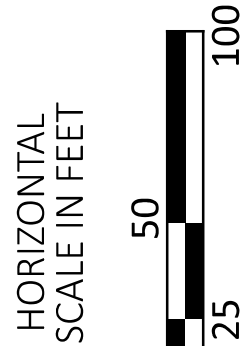
PLAN LEGEND

- XX-X LIGHT POLE W/ LED LUMINAIRE
- F FUTURE LIGHT POLE LOCATION
- XX-X HIGH MAST LIGHT TOWER W/ 2-LED ASYMMETRIC LUMINAIRES
- PB-X PULL BOX (LIGHTING), 725.08 (BY SIZE)
- ▲ PROPOSED POWER SERVICE
- 1-1/2" DUCT CABLE W/ 3-WIRE NO. X AWG
- 3" CONDUIT, 725.04 W/ 3-WIRE NO. X AWG DISTRIBUTION CABLE
- STUB & CAP CONDUIT ELL

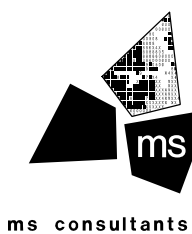
NOTES:

- OFFSETS TO LIGHT POLES/TOWERS ARE FROM NEAREST EOP.
- OFFSETS TO PULL BOXES ARE FROM  $\frac{B}{C}$ .

LIGHTING PLAN - NORTHBOUND TRUCK PARKING  
I.R. 77 - STA. 174+00 TO STA. 186+50



DESIGN AGENCY



DESIGNER

KJF

REVIEWER

KWR 09-12-25

PROJECT ID

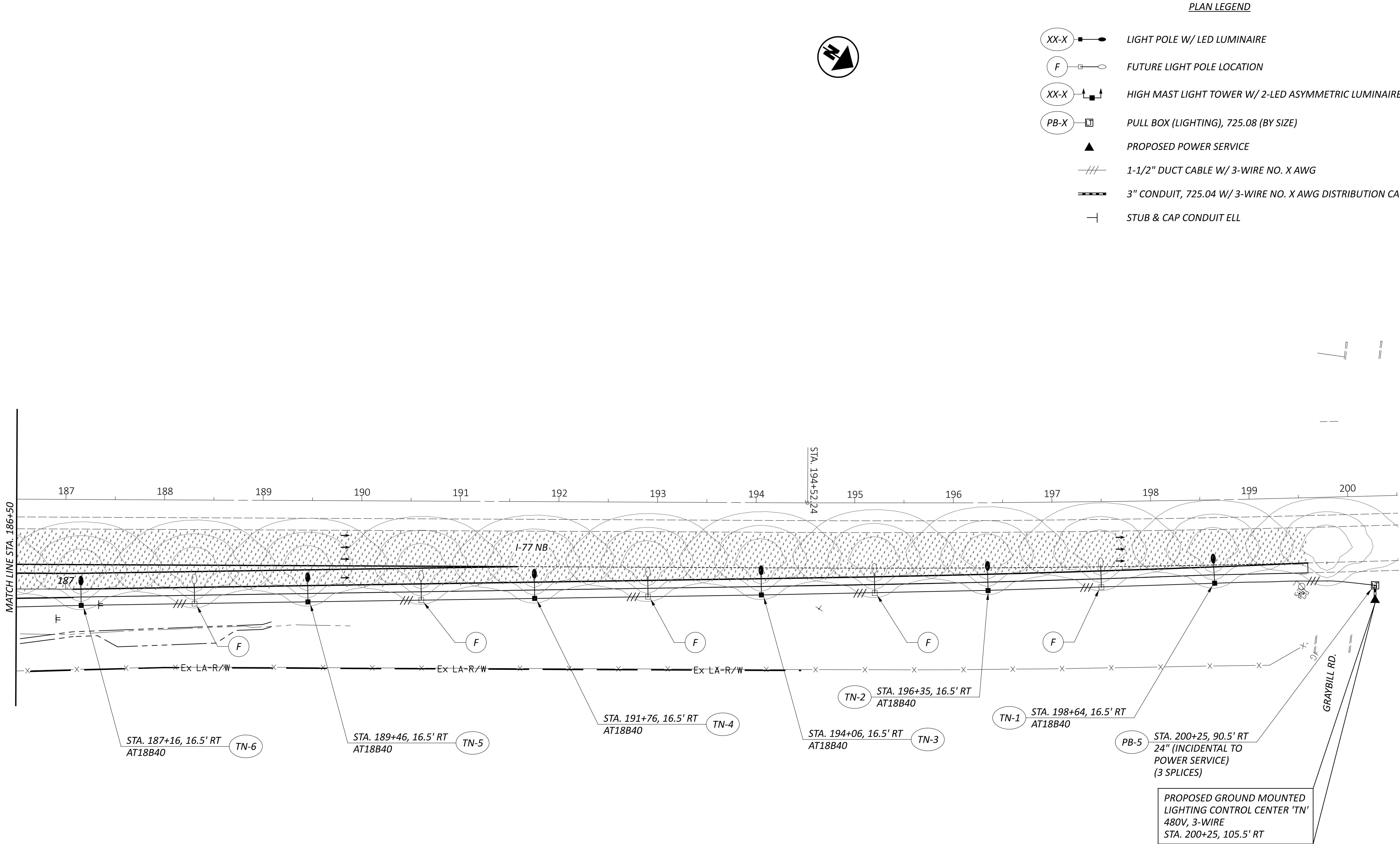
122880

SHEET

P.85

TOTAL

86



NOTES:

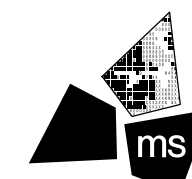
1. OFFSETS TO LIGHT POLES/TOWERS ARE FROM NEAREST EOP.
2. OFFSETS TO PULL BOXES ARE FROM E/C.

PLAN LEGEND

- XX-X LIGHT POLE W/ LED LUMINAIRE
- F FUTURE LIGHT POLE LOCATION
- XX-X HIGH MAST LIGHT TOWER W/ 2-LED ASYMMETRIC LUMINAIRES
- PB-X PULL BOX (LIGHTING), 725.08 (BY SIZE)
- PROPOSED POWER SERVICE
- 1-1/2" DUCT CABLE W/ 3-WIRE NO. X AWG
- 3" CONDUIT, 725.04 W/ 3-WIRE NO. X AWG DISTRIBUTION CABLE
- STUB & CAP CONDUIT ELL

LIGHTING PLAN - NORTHBOUND TRUCK PARKING  
I.R. 77 - STA. 186+50 TO STA. 200+50

DESIGN AGENCY



ms consultants, inc.

DESIGNER

KJF

REVIEWER

KWR 09-12-25

PROJECT ID

122880

SHEET

P.86

TOTAL

86

